



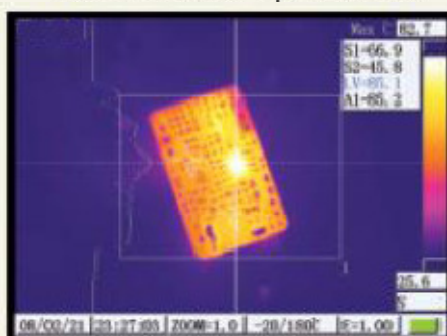
Specifications EIRC-P3

EIRC-P3 series offer outstanding image quality and temperature measurement performance in an affordable, rugged and easy to use infrared camera. It works as a professional tool effective in different applications such as power plant, petrochemicals, scientific research, fire fighting, and building inspection, metallurgy, etc.

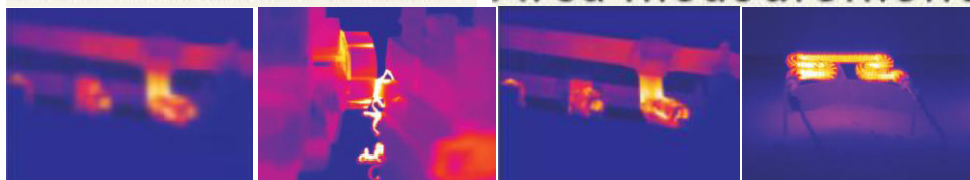
Model	EIRC-P3c	EIRC-P3e
Detector	Un-cooled FPA micro-bolometer	Un-cooled FPA micro-bolometer
Array size	384 x 288 pixel	384 x 288 pixel
Thermal sensitivity	0.06Celsius at 30Celsius	0.06Celsius at 30Celsius
Spatial resolution	0.88mrad	0.88mrad
Field of view / min. focus distance	16° x 12° / 0.5m	16° x 12° / 0.5m
Frame rate	50 / 60Hz	50 / 60Hz
Focus	Manual	Auto/Manual electronic focus
Electronic zoom	1~8 x continuous electronic zoom	1~8 x continuous electronic zoom
Spectral range	8~14µm	8~14µm
Built-in visible light camera	300,000 pixel, superposing (picture in picture) or full screen display of visible light picture & infrared light picture	
View finder	Built-in high resolution color LCD	Built-in high resolution color LCD
LCD displayer	High resolution color LCD, 640 x 480	High resolution color LCD, 640 x 480
Temperature range	-20Celsius to +500Celsius, optional up to +1200Celsius	
Accuracy	±2Celsius or ± 2% of reading, whichever is greater	
Measurement correction	Automatic/Manual	Automatic/Manual
Measurement mode	Up to 4 movable spots, up to 3 movable areas (max., min., average temp.), line profile, isotherms, temp. difference, alarm (voice, color)	Up to 10 movable spots, up to 5 movable areas (max., min., average temp.), line profile, isotherms, temp. difference, alarm (voice, color)
Color palette	9 palettes changeable (Iron, rainbow, grey, grey inverted, etc.	
Image adjusting	Auto/manual gain and brightness	Auto/manual gain and brightness
Setup function	Date, time, temp. unit (° C/° F/K), language	Date, time, temp. unit (° C/° F/K), language
Emissivity correction	Variable from 0.01 to 1.00(step of 0.01) or select from pre-defined material list	
Ambient temp. correction	Automatic correction according to user input	
Atmospheric transmission correction	Automatic correction according user input object distance, relative humidity, ambient temp.	
Storage card	Built-in flash memory card(1G), storage more than 2000 images	
Storage mode	Automatic/manual single image saving	Automatic/manual single image saving
File format-thermal	JPEG, 14 bit thermal image with measurement data	
Visible-light image file format	JPEG or stored with thermal image (picture-in-picture)	
Voice annotation	Input via built-in microphone up to 40 seconds digital voice per image (stored with image)	
Image improvement	Averaging(S2, S4, S8, S16), Spatial filter	
Laser pointer	Class 2, 1mw 635nm (red)	
Battery	Li-ion rechargeable	
Battery operating time	2 hours continuous operation	
Charging system	Intelligent charger or power supply adaptor (optional) online charge	
Power saving	Yes	
External power	10 ~ 15V DC	
Operating temp.	-15Celsius to +50Celsius	
Humidity	≤90% non-condensing	
Encapsulation	IP54	IP54
Audio output	Yes	Yes
Video output	PAL/NTSC/VGA	PAL/NTSC/VGA
USB	Image, measurement data, voice transfer to PC	
Dimensions	305mm x 130mm x 135mm	305mm x 130mm x 135mm
Weight	1.83KG	1.69KG



One button operation



Line measurement Area measurement



Optional Lenses





